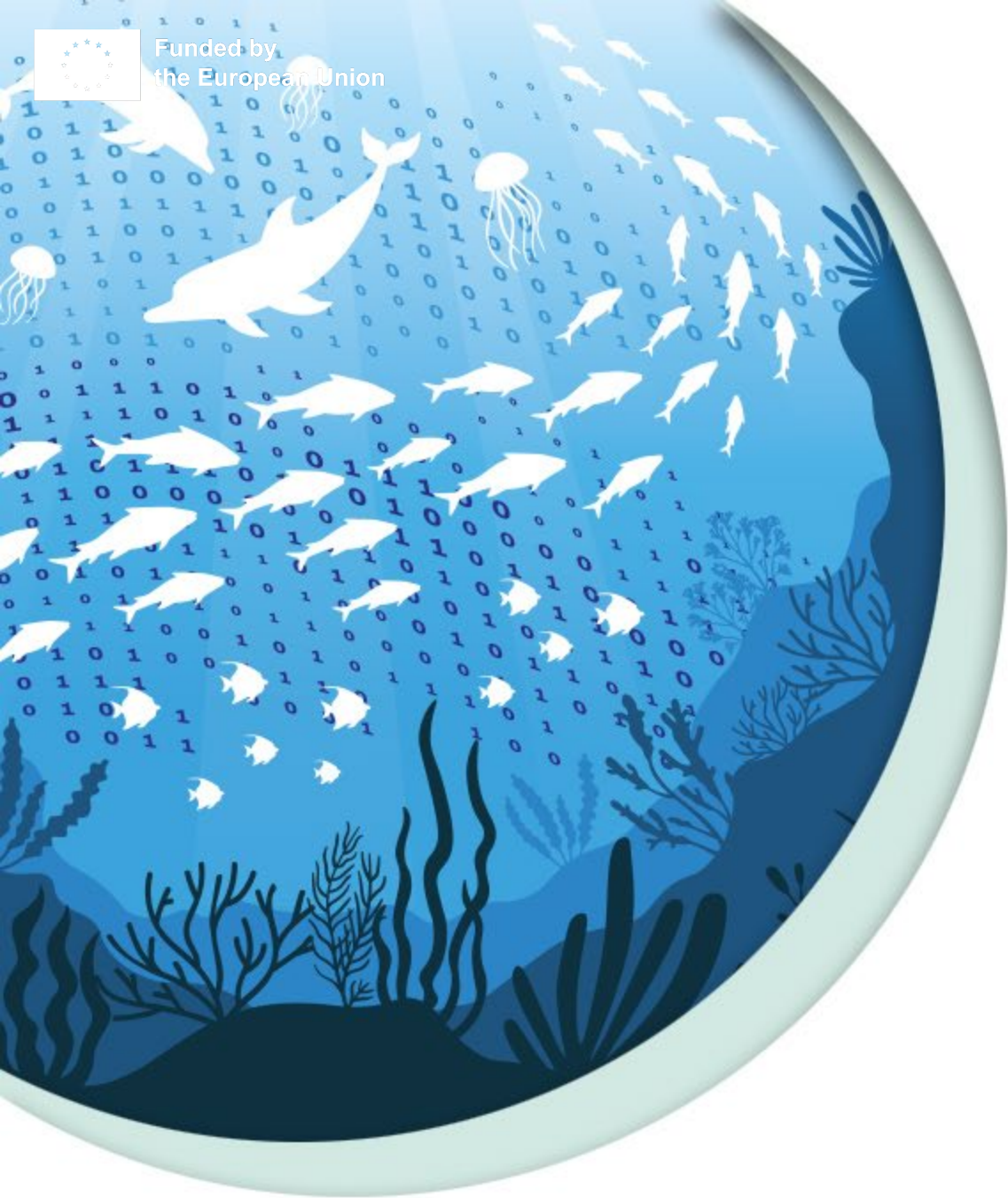




Funded by  
the European Union



# DTO-BioFlow

Integration of biodiversity monitoring  
data into the Digital Twin Ocean

Publishing data using the  
IPT

# Concept

“The Integrated Publishing Toolkit (IPT) is a free open-source software used to create and manage distributed data repositories that share biodiversity data into the GBIF network”

# Concept

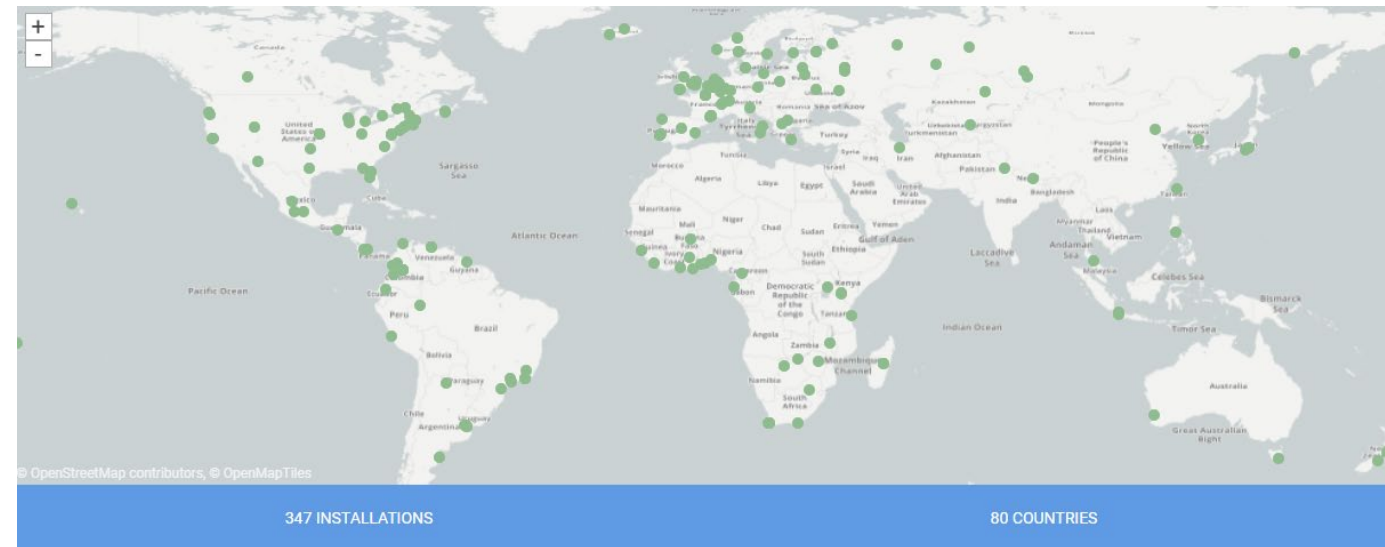
≡ Data repository

≡ Creation of Darwin Core archive files

≡ Creation of data paper templates

≡ Automated data flow with OBIS/GBIF

≡ Limited to GBIF formats and scope



# Publishing data

≡ Uploading data

≡ Mapping data to Darwin Core

≡ Filling in Metadata

≡ Publishing



- ≡ .txt, .csv, .xlsx, .zip, DwC-A files
- ≡ DB connection
- ≡ URL

- ≡ Manual to Automated
- ≡ Allows data modifications

- ≡ Manual or via EML.xml file

- ≡ Quality Control checks



# IPT Demo

HOME

Hosted resources available through this IPT

465 resource(s) currently available

Filter:

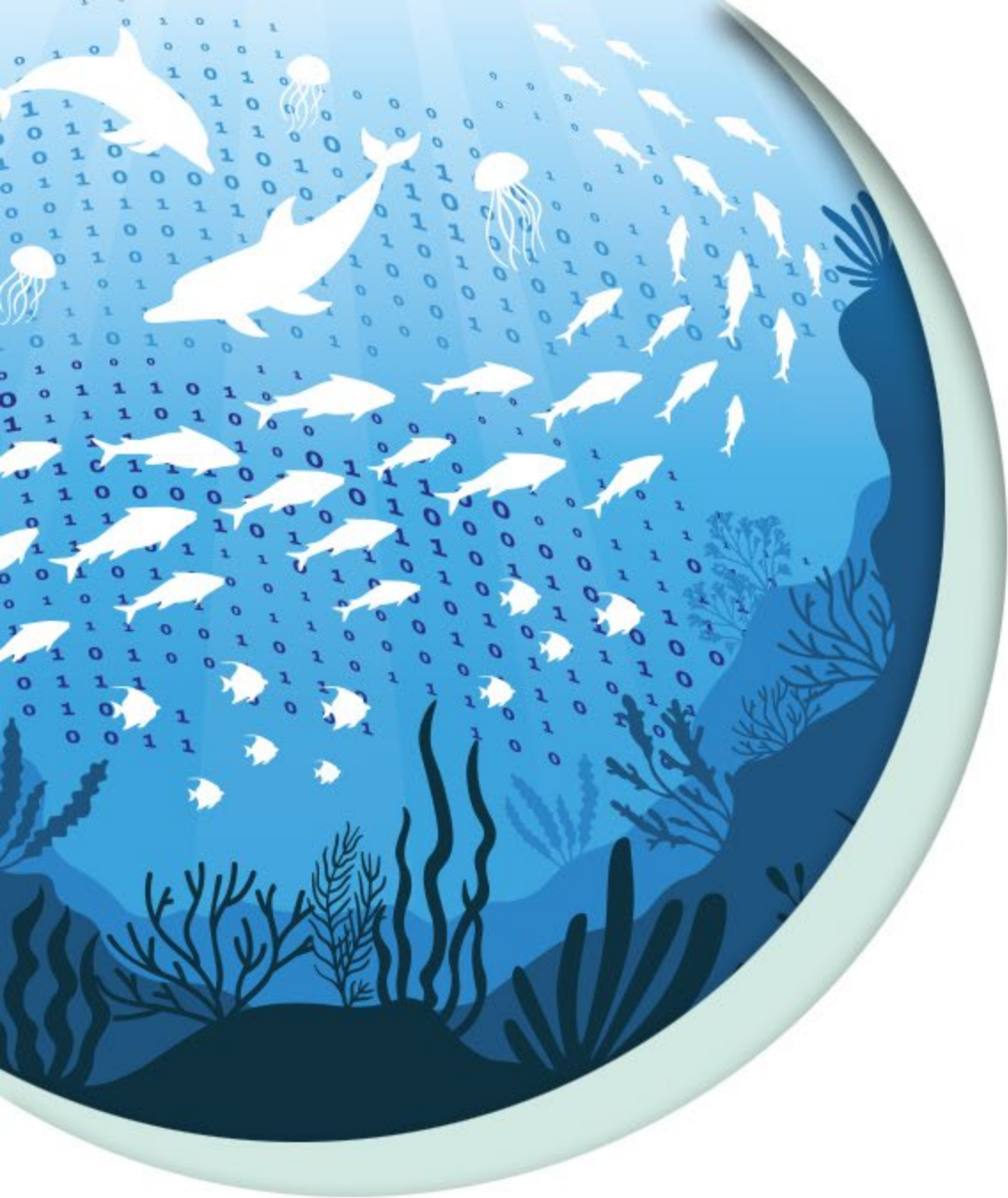
Logo	Name	Organization	Type	Subtype	Records	Last modified	Last publication	Next publication
	Marine impactful cryptogenic and alien species in the Greek Seas: A georeferenced dataset (1980-2020)	No organisation	Occurrence	--	5,404	2024-04-09 12:00:01	2024-04-09 12:00:11	2024-04-10 12:00:01
	Cryptogenic, Rare and Non-indigenous marine species in the Sicilian coastline in the Mediterranean sea recorded by the Sicilian Biodiversity Inventory (SicBI), TunSea, 2013-2023	No organisation	Sampling event	--	0	2024-04-09 12:00:01	2024-04-09 12:00:01	2024-04-10 12:00:01
	Marine benthic ecology of Lewis Benthic Ecology Drop-down	No organisation	Sampling event	--	80	2024-04-08 16:57:16	2024-04-08 16:57:16	2024-04-09 12:00:01
	Marine benthic ecology of Lewis Benthic Ecology Drop-down	No organisation	Sampling event	--	20	2024-04-08 16:57:16	2024-04-08 16:57:16	2024-04-09 12:00:01

# Relevant sources

≡ [GBIF Integrated Publishing Toolkit \(IPT\) User Manual](#)

≡ [What is GBIF](#)

≡ [IPT Github Repository](#)



# DTO-BioFlow

Integration of biodiversity monitoring data into the Digital Twin Ocean

THANKS!